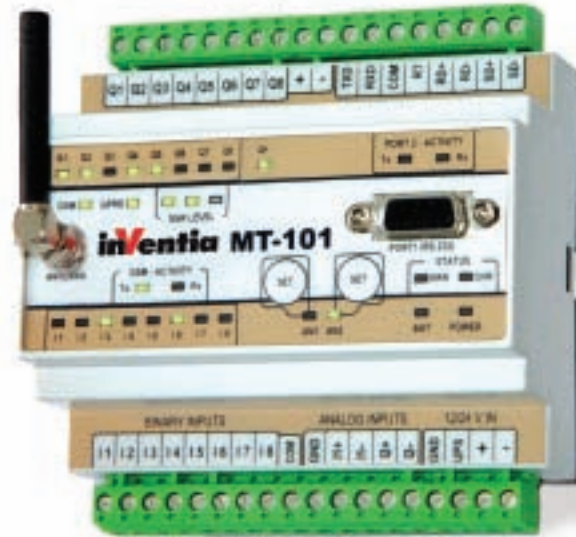


MT - 101

Telemetry module for On Line monitoring and local control



The MT range of wireless data transfer devices combines the I/O functionality of a plc, with the ease & low cost connectivity of the cell phone network. The latest GPRS technology provides “always on” as opposed to dial up modems, + no distance, weather, or terrain limits. As a Vodafone Primary Partner QHi can also provide the secure static IP data network, and the data SIM card – the “Total Wireless Solution “ – right out of the box.

Features

- GSM/GPRS packet transmission
- Integral GSM 900 / 1800 modem
- Binary inputs and outputs (8x8)
- Analog inputs 4-20 mA (MT-301)
- Serial communication port for external data sources
- Support for standard transmission protocols
- Removable terminal blocks

Resources

- 8 optoisolated binary inputs 24VAC/ DC (I1-8)
- 8 configurable binary outputs/inputs 24V DC (Q1-Q8)
- 2 optoisolated analogue inputs 4-20 mA (8bit acc./10 bit res..)
- Isolated serial port RS232/485/422
- Remotely updatable firmware Flash memory
- Externally synchronizable RTC (clock)

Functionality

- Transmission modes
 - GPRS –packet transmission
 - SMS
 - CSD circuit switched transmission (modem only).
- Embedded HTTP server with CGI scripting for data presentation and configuration though GPRS (not in ver.1.x)
- All binary inputs can be configured as counters or f/analogue converters (0-2 kHz)
- Configuration of simple control functions using I/O's and configurable, event triggered flags (SMS sending, data sending/logging, Output control).

- Unsolicited messaging.
- Scheduled SMS and data sending
- Simple multipoint alarm configuration for binary and analogue Inputs.
- Additional manual alarm level setting capability for analogue inputs AI1 and AI2 (front panel buttons).
- External optoisolated RS232/422/485 serial port for data transmission.
- Serial port emulated transmission protocols in GPRS mode: MODBUS RTU (Master and Slave). Transparent intelligent modem .
- Smart MODBUS R TU routing.
- Multibroadcast for transparent mode.
- Local or remote (via GPRS) configuration.
- Configurable access security – IP and Tel# list.
- DIN rail mounting.
- Power supply 12/24 V DC, 24 V AC
- Removable terminal blocks
- Status LED (status, GSM transmission activity, GSM signal level, GPRS activity , serial port activity, I/O status).

General

Dimensions (length x width x height)	105x86x60 mm
Weight	300 g
Fixing	DIN Rail 35mm
Operating temperature	-20... +55°C
Protection class	IP40
Maximum voltage between any contact and device ground	60Vrms max.
Output power (EGSM 1800 MHz)	33 dBm (1w) – Class 1
Modulation	0,3 GMSK
Channel spacing	200 kHz
Antenna	50Ω
(EGSM 900 MHz)	Transmitter: from 880 MHz to 915 MHz Receiver: from 925 MHz to 960 MHz
Output power (EGSM 900 MHz)	33 dBm (2w) - Class 4
Frequency range (EGSM 1800 MHz)	Transmitter: from 1710 MHz to 1785 MHz Receiver: from 1805 MHz to 1880 MHz

Power supply

DC (12V, 24V)	10,8...36 V		
AC (24V)	18...26,4Vrms		
Input curr ent (A) (for 12V DC)	Idle	Active	Max
	0,10	0,35	0,60
	0,05	0,1	0,30
Input curr ent (A) (for 24V DC)	Idle	Active	Max
	0,05	0,1	0,30
	0,05	0,1	0,30

Inputs | 1...|8

Input voltage range	-36... 30 V
Input resistance	5,4 kΩ
Input voltage ON (1)	> 9V or <-9V
Input voltage OFF (0)	-3V... 3V

Inputs/Outputs Q1...Q8

Inputs

Maximum Input voltage	36V
Inputs resistance	5,4k Ω typ.
Inputs coltage ON	>9V min.
Inputs coltage OFF	<3V max

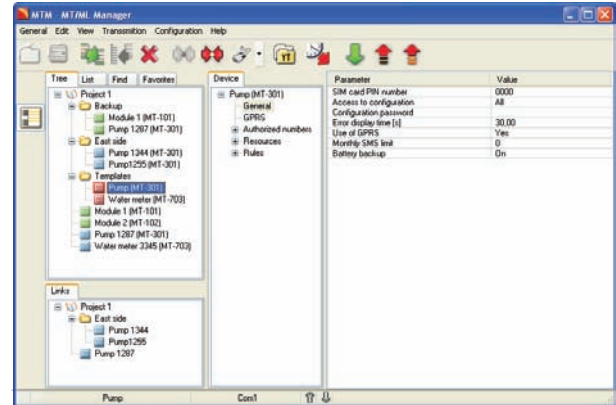
Outputs

Recommended mean current for single Output	50mA
Single output current	350mA max
Single current for all Outputs	400mA max.
Voltage drop at 350mA	<3,5V max.
Off state current	<0,2mA max.

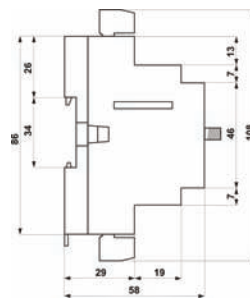
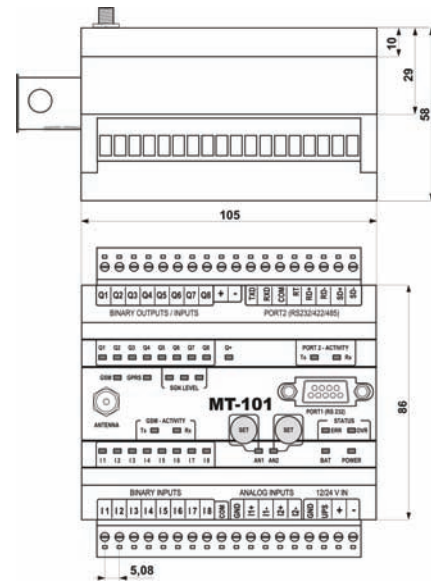
Analog inputs AN1, AN2 (4...20mA)

Input curr ent	4...20 mA
Maximum Inputs curr ent	50mA max.
Dynamic Input impedance	25 Ω typ.
Voltage drop at 20mA	< 5V max.
A/D converter	10 bits
Accuracy	±1,5% max.
Nonlinearity	±max.

Configuration Utility



Drawings and Dimensions



All dimensions in Millimeters

For further information

QHi-Systems

Talisman House, Allied Business Centre, Coldharbour Lane
Harpenden, Hertfordshire, AL5 4UT, United Kingdom

T +44 (0)1582 461123 F 44 (0)1582 461117
E sales@qhigroup.com W www.qhigroup.com