

# MT - 301/302/303

Telemetry module for On Line monitoring and local control



The MT range of wireless data transfer devices combines the I/O functionality of a plc, with the ease & low cost connectivity of the cell phone network. The latest GPRS technology provides "always on" as opposed to dial up modems, + no distance, weather, or terrain limits. As a Vodafone Primary Partner QHi can also provide the secure static IP data network, and the data SIM card – the "Total Wireless Solution " – right out of the box.

## Features

- GSM/GPRS packet transmission
- Integral GSM 900 / 1800 modem
- Binary inputs (MT-301/302/303)
- Binary outputs (MT-301/303)
- Analog inputs 4-20 mA (MT-301)
- Event triggered messaging
- Removable terminal blocks
- Integral Li-Polymer battery backup
- DIN rail mountable
- Easy configuration software

## Resources

MT -	301	302	303
• Binary inputs/counters	4	8	6
• Binary outputs	2	-	2
• Analog inputs	2	-	-



## Functionality

- Transmission modes
  - GPRS – packet transmission
  - SMS
- All binary inputs can be configured as counters (5Hz max)
- Easy configuration of event triggered SMS, data sending and call in
- Unsolicited messaging
- Simple, multipoint alarm configuration for both binary and analog inputs
- Local or remote (via GPRS) configuration
- Configurable access security – IP and Tel # list , optional password for configuration
- DIN rail mounting
- Power supply 9...30V DC
- Removable terminal blocks
- Status LED's (GSM availability, GSM status/mode, programming port activity)

### General

Dimensions (length x width x height)	124x63x30 mm
Weight	100 g
Fixing	DIN Rail 35mm
Operating temperature	0° ... +55°C
Protection class	IP40

<sup>1)</sup> Temperatures below 0°C are not recommended due to physical properties of Li-Polymer battery

### GSM/GPRS Modem

Modem type	WISMO Quick
GSM	Dual Band GSM/GPRS module EGSM900/1800
Frequency range (EGSM 900 MHz)	Transmitter: from 880 MHz to 915 MHz Receiver: from 925 MHz to 960 MHz
Output power (EGSM 900 MHz)	33 dBm (2W) – Class 4
Frequency range (EGSM 1800 MHz)	Transmitter: from 1710 MHz to 1785 MHz Receiver: from 1805 MHz to 1880 MHz
Output power (EGSM 1800 MHz)	30 dBm (1W) – Class 1
Modulation	0,3 GMSK
Channel spacing	200 kHz
Antenna	50Ω

### Inputs | 1...|8

Input voltage range	0...30 V
Input resistance	5,4 kΩ
Input voltage ON (1)	> 9V
Input voltage OFF (0)	0...3V

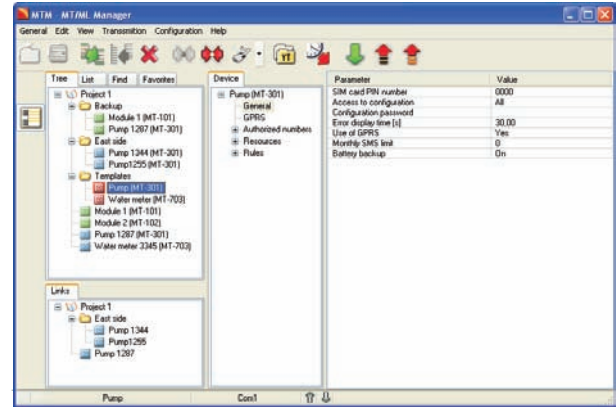
### Outputs Q1...Q2

Recommended mean current for a single output	50mA
Single output current	350mA max.
Voltage drop at 350mA	<0,5 V

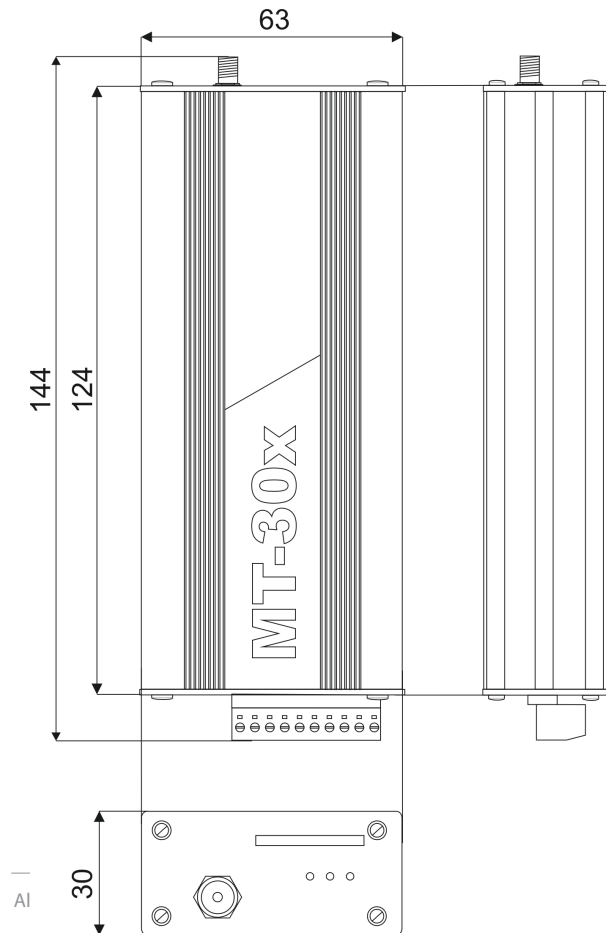
### Analog inputs A1, A2 (4...20mA)

Input current	4...20 mA
Input resistance	100Ω typ.
Voltage drop at 20mA	< 2V max.
A/D converter	10 bits
Accuracy	±3% max.

### Configuration Utility



### Drawings and Dimensions



### For further information

QHi-Systems

Talisman House, Allied Business Centre, Coldharbour Lane  
Harpenden, Hertfordshire, AL5 4UT, United Kingdom

T +44 (0)1582 461123 F 44 (0)1582 461117  
E sales@qhigroup.com W www.qhigroup.com